

Riverside Energy Park

Land Plans

VOLUME NUMBER:

02

PLANNING INSPECTORATE REFERENCE NUMBER:

EN010093

DOCUMENT REFERENCE:

2.1

November 2018 | Revision 0 | APFP Regulation 5(2)(i)

Planning Act 2008 | Infrastructure Planning (Applications: Prescribed Forms and Procedure) Regulations 2009

Planning Act 2008

Cory Environmental Holdings Limited – Riverside Energy Park

Land Plans

Contents

Location and Key Plan	1
Land Plans	2-17
Special Category Plan	12

These plans are to accompany the Book of Reference (Document Reference 4.3). They show the detailed rights required and the location extent of open space land within the Order Limits from the proposed Riverside Energy Park site at Norman Road, Belvedere, to the Littlebrook substation site in Dartford, Kent.

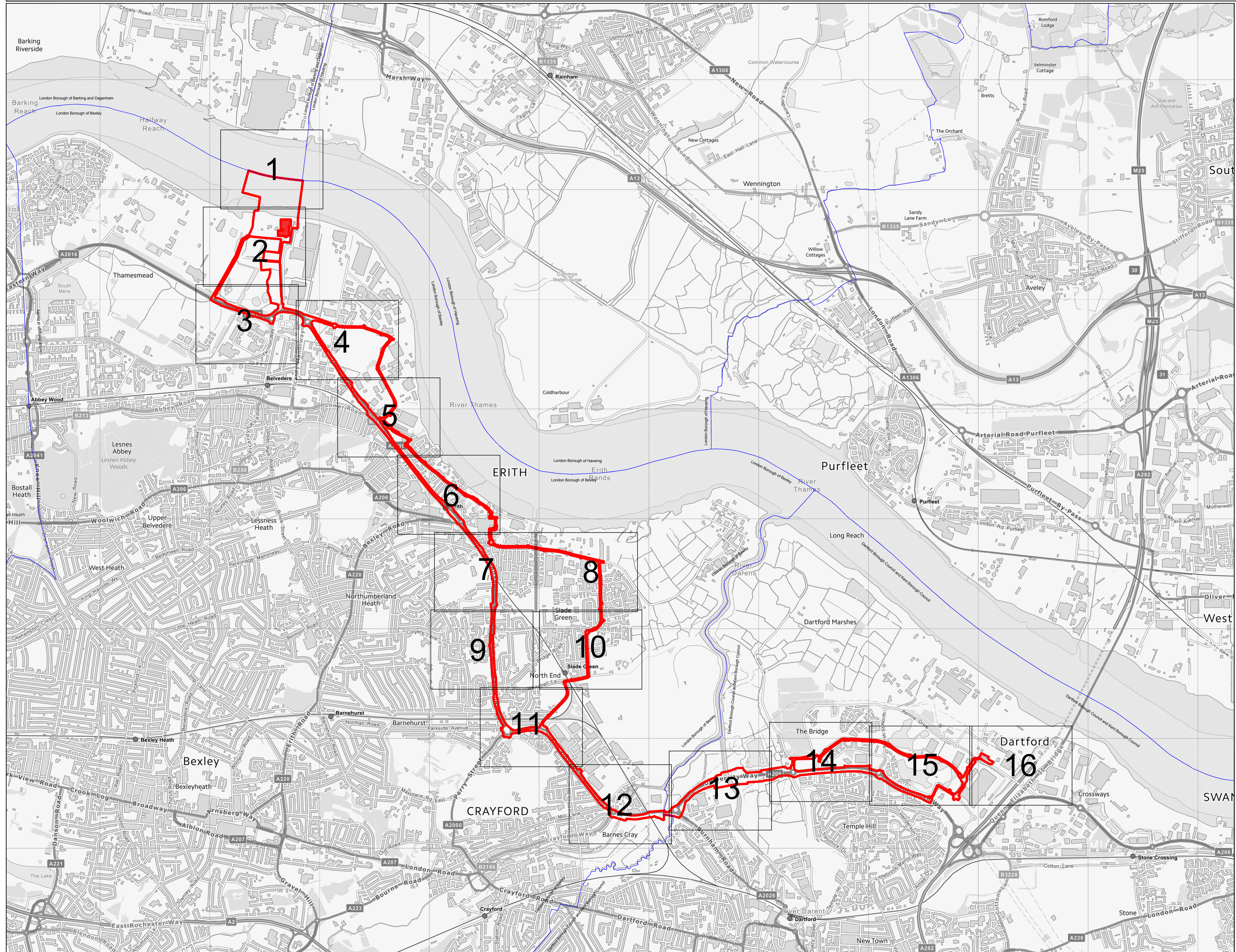


Riverside Energy Park



Key:

- Order limits - the area within which the authorised development may be carried out.
- Area not included in Development Consent Order.
- Local Authority Boundary



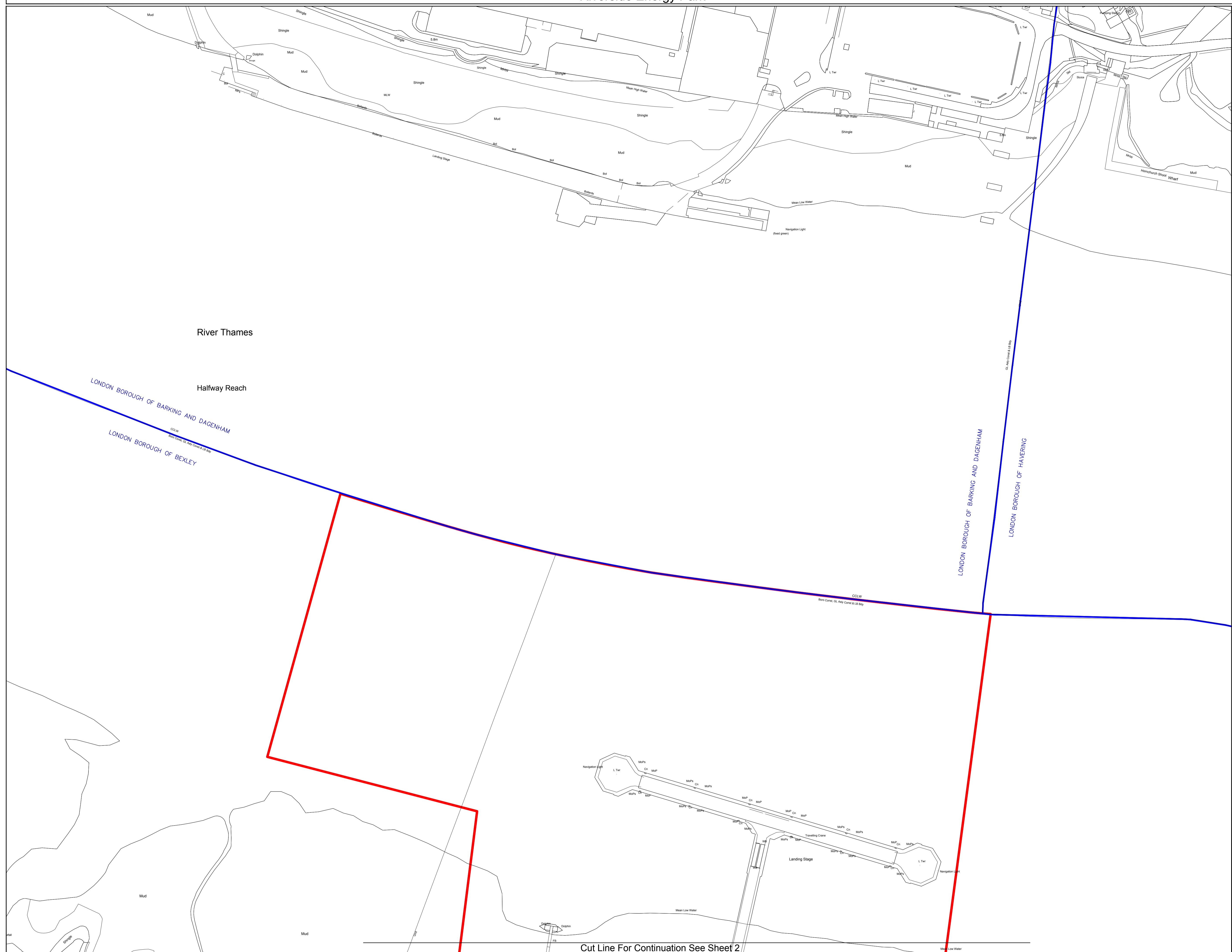
Land Plans Key Plan	
Scale: 1:15000 @ A1	
Dwg Ref: N/CAD Team/Cory Environmental/DWGS/Master Plan/Cory_E_Master_Plan_Rev0_14.11.2018.dwg	
Doc Ref: 2.1	Regulation 5(2)(i)
© Crown copyright and database rights 2018 Ordnance Survey 0100031673	
	Date: 14.11.2018 Rev: 0
Drawn by: G.J. Checked: A.P.	 infrastructure and regeneration

Riverside Energy Park



Key:

- Order limits - the area within which the authorised development may be carried out.
- Order land - freehold and leasehold to be compulsorily acquired and in relation to which it is proposed to extinguish easements, servitudes and other private rights.
- Order land - new rights to be compulsorily acquired and in relation to which it is proposed to extinguish easements, servitudes and other private rights.
- Order land - temporary use of land in relation to which it is proposed to suspend easements, servitudes and other private rights.
- Local Authority Boundary



River Thames

Halfway Reach

LONDON BOROUGH OF BARKING AND DAGENHAM
 COLW
 From Centre of New Canal & LB Bdy
 LONDON BOROUGH OF BEXLEY

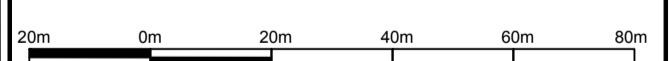
LONDON BOROUGH OF BARKING AND DAGENHAM
 COLW
 From Centre of New Canal & LB Bdy
 LONDON BOROUGH OF HAVERING

Title:

**Land Plans
 Sheet 1 of 16**

Scale:

1: 1250 @ A1

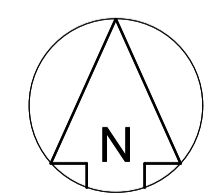


Dwg Ref: N\CAD Team\Cory Environmental\DWGS\Master Plan\Cory_E_Master_Plan_Rev0_14.11.2018.dwg

Doc Ref: 2.1

Regulation 5(2)(i)

© Crown copyright and database rights 2018 Ordnance Survey 0100031673



Date: 14.11.2018	Drawn by: G.J
Rev: 0	Checked: A.P

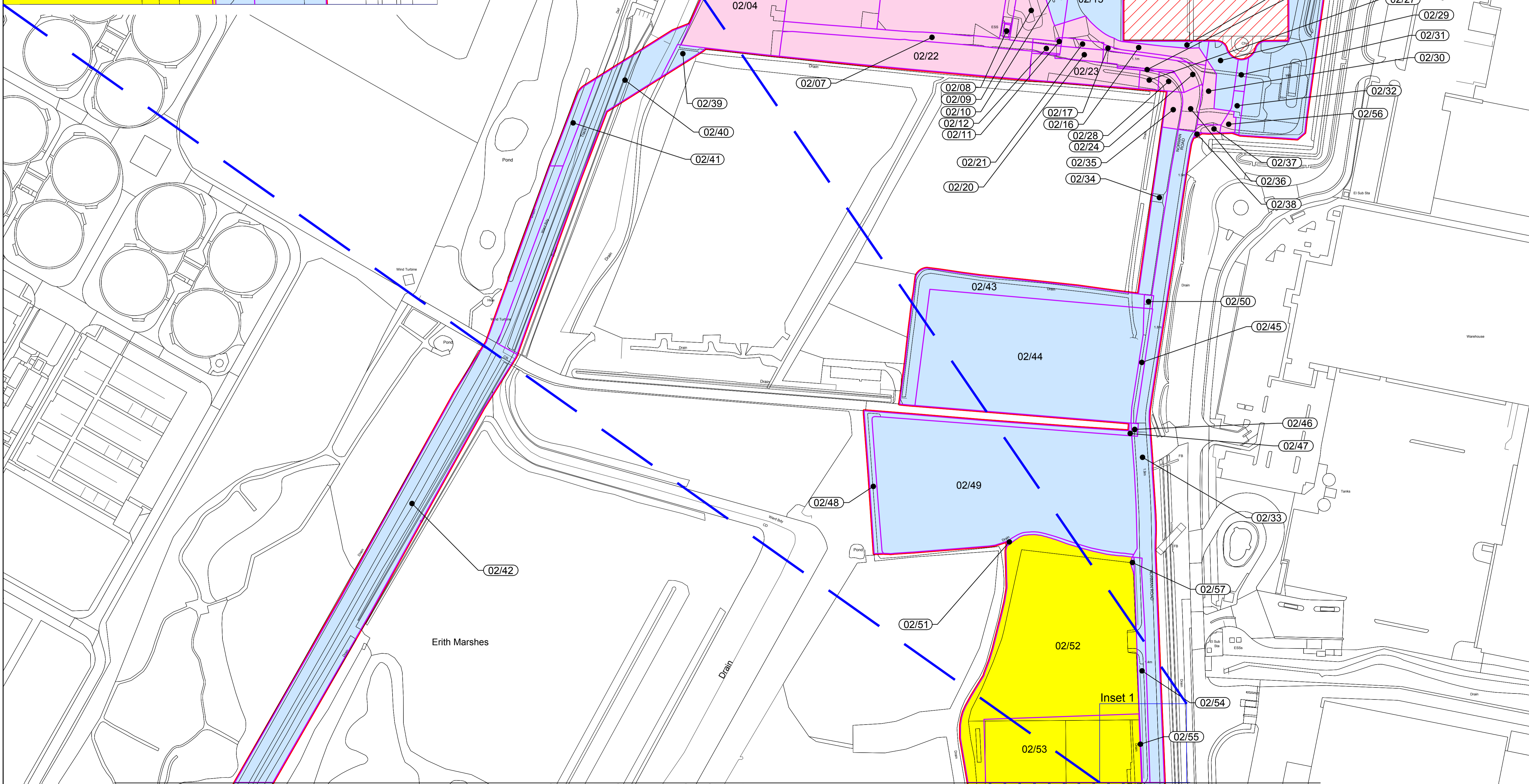
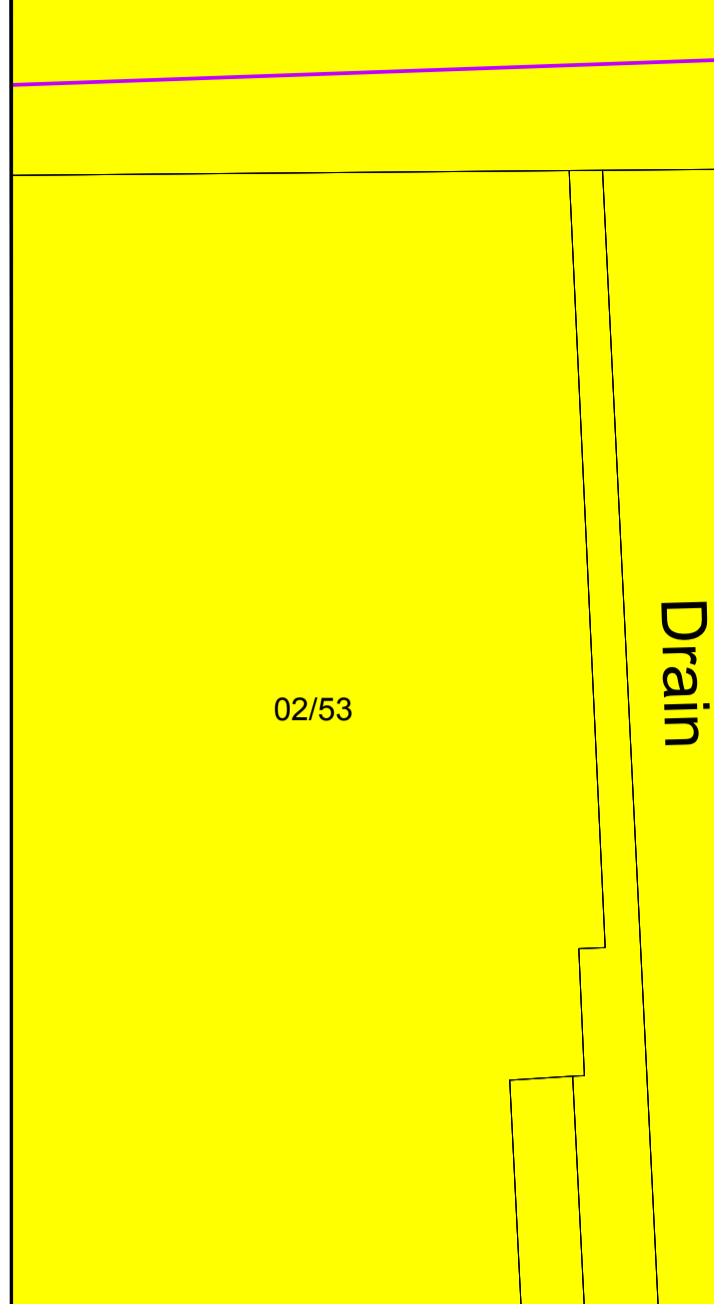


Cut Line For Continuation See Sheet 2

Riverside Energy Park

Cut Line For Continuation See Sheet 1

Inset 1
Scale 1:250
02/52



Cut Line For Continuation See Sheet 3



- Key:
- Order limits - the area within which the authorised development may be carried out.
 - Order land - freehold and leasehold to be compulsorily acquired and in relation to which it is proposed to extinguish easements, servitudes and other private rights.
 - Order land - new rights to be compulsorily acquired and in relation to which it is proposed to extinguish easements, servitudes and other private rights.
 - Order land - temporary use of land in relation to which it is proposed to suspend easements, servitudes and other private rights.
 - Area not included in Development Consent Order.
 - Land excluded from compulsory acquisition powers and temporary use powers

Title: **Land Plans Sheet 2 of 16**

Scale: 1:1250 @ A1

Dwg Ref: N\CAD Team\Cory Environmental\DWGS\Master Plan\Cory_E_Master_Plan_Rev0_14.11.2018.dwg

Doc Ref: 2.1 Regulation 5(2)(i)

© Crown copyright and database rights 2018 Ordnance Survey 0100031673

N	Date: 14.11.2018	Drawn by: G.J
	Rev: 0	Checked: A.P

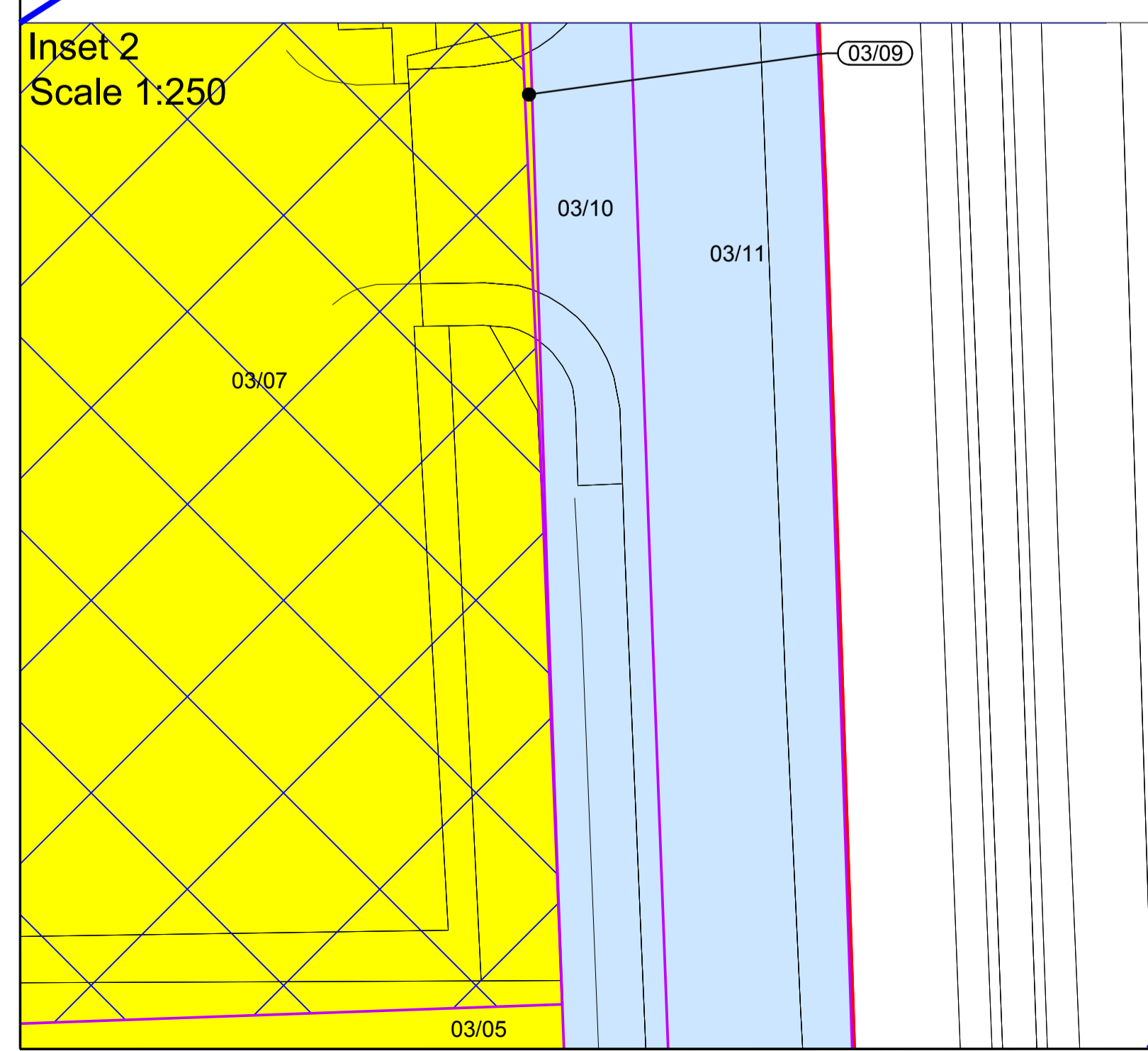
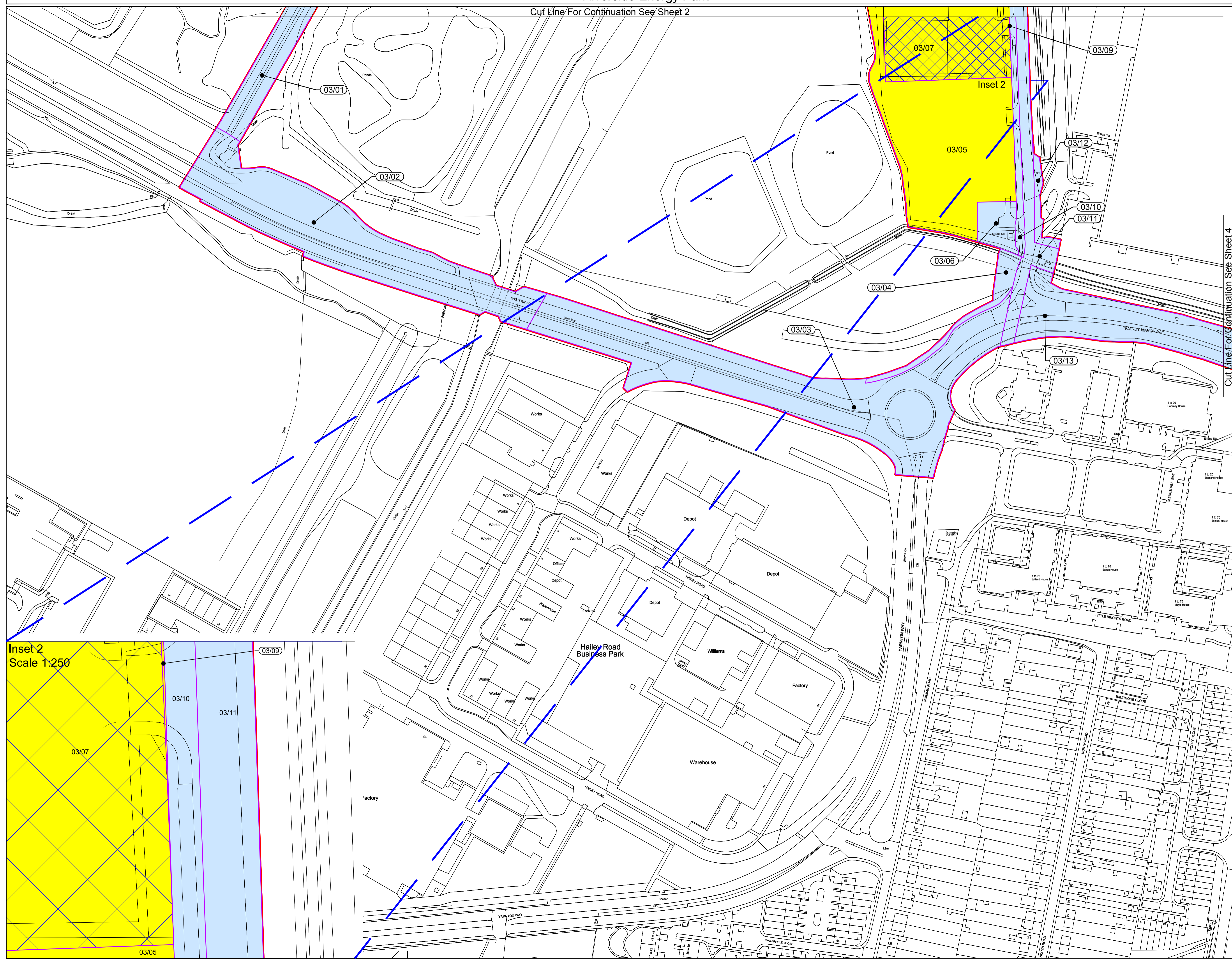
Riverside Energy Park

Cut Line For Continuation See Sheet 2



Key:

- Order limits - the area within which the authorised development may be carried out.
- Order land - freehold and leasehold to be compulsorily acquired and in relation to which it is proposed to extinguish easements, servitudes and other private rights.
- Order land - new rights to be compulsorily acquired and in relation to which it is proposed to extinguish easements, servitudes and other private rights.
- Order land - temporary use of land in relation to which it is proposed to suspend easements, servitudes and other private rights.
- Land excluded from compulsory acquisition powers and temporary use powers



Cut Line For Continuation See Sheet 4

Title: **Land Plans Sheet 3 of 16**

Scale: 1:1250 @ A1

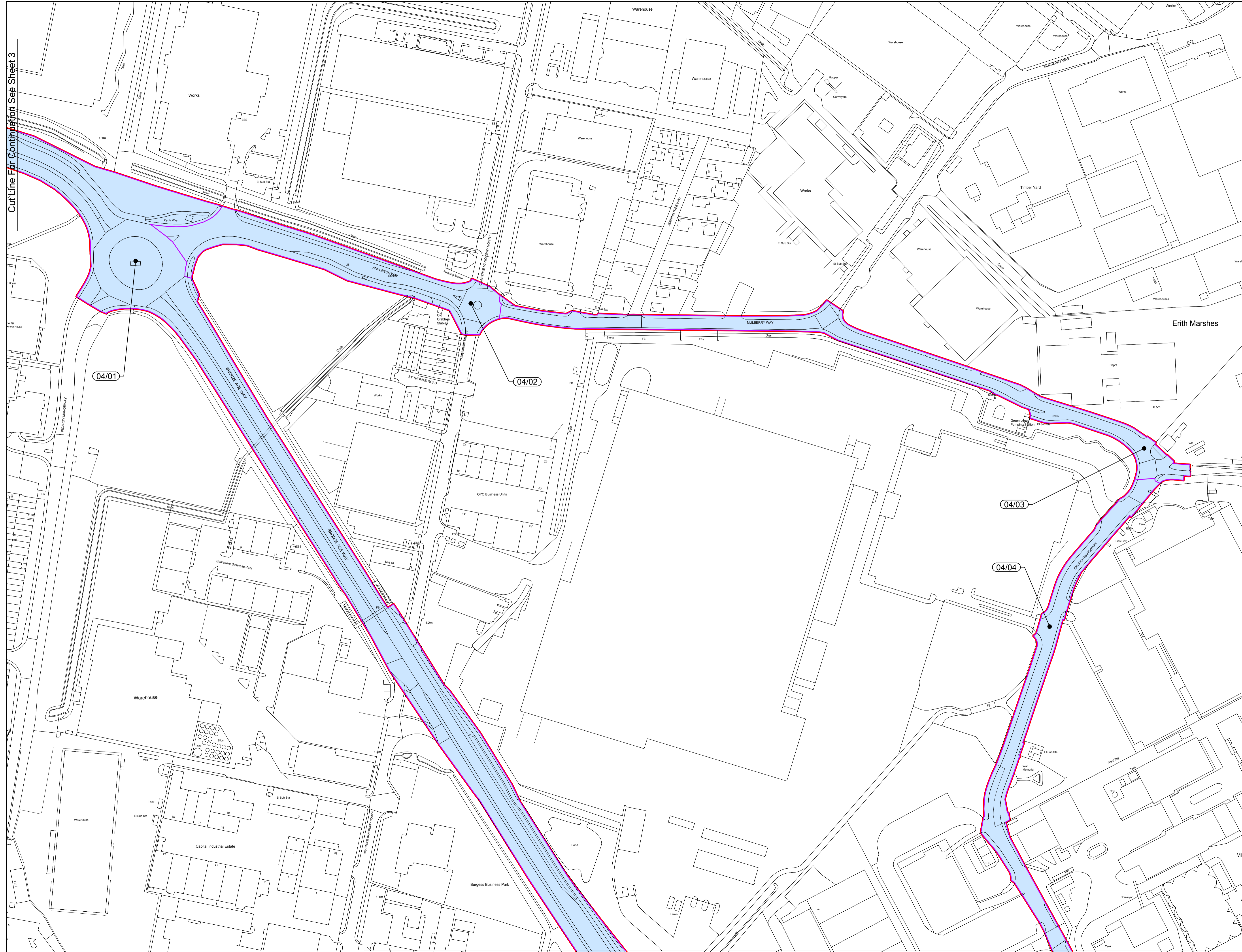
Dwg Ref: N\CAD Team\Cory Environmental\DWGS\Master Plan\Cory_E_Master_Plan_Rev0_14.11.2018.dwg

Doc Ref: 2.1 Regulation 5(2)(i)

© Crown copyright and database rights 2018 Ordnance Survey 0100031673

	Date: 14.11.2018	Drawn by: G.J.
	Rev: 0	Checked: A.P.

- Key:
- Order limits - the area within which the authorised development may be carried out.
 - Order land - freehold and leasehold to be compulsorily acquired and in relation to which it is proposed to extinguish easements, servitudes and other private rights.
 - Order land - new rights to be compulsorily acquired and in relation to which it is proposed to extinguish easements, servitudes and other private rights.
 - Order land - temporary use of land in relation to which it is proposed to suspend easements, servitudes and other private rights.



Erith Marshes

04/01

04/02

04/03

04/04

Title: **Land Plans Sheet 4 of 16**

Scale: 1:1250 @ A1

Dwg Ref: N\CAD Team\Cory Environmental\DWGS\Master Plan\Cory_E_Master_Plan_Rev0_14.11.2018.dwg

Doc Ref: 2.1 Regulation 5(2)(i)

© Crown copyright and database rights 2018 Ordnance Survey 0100031673

	Date: 14.11.2018	Drawn by: G.J
	Rev: 0	Checked: A.P

Cut Line For Continuation See Sheet 3

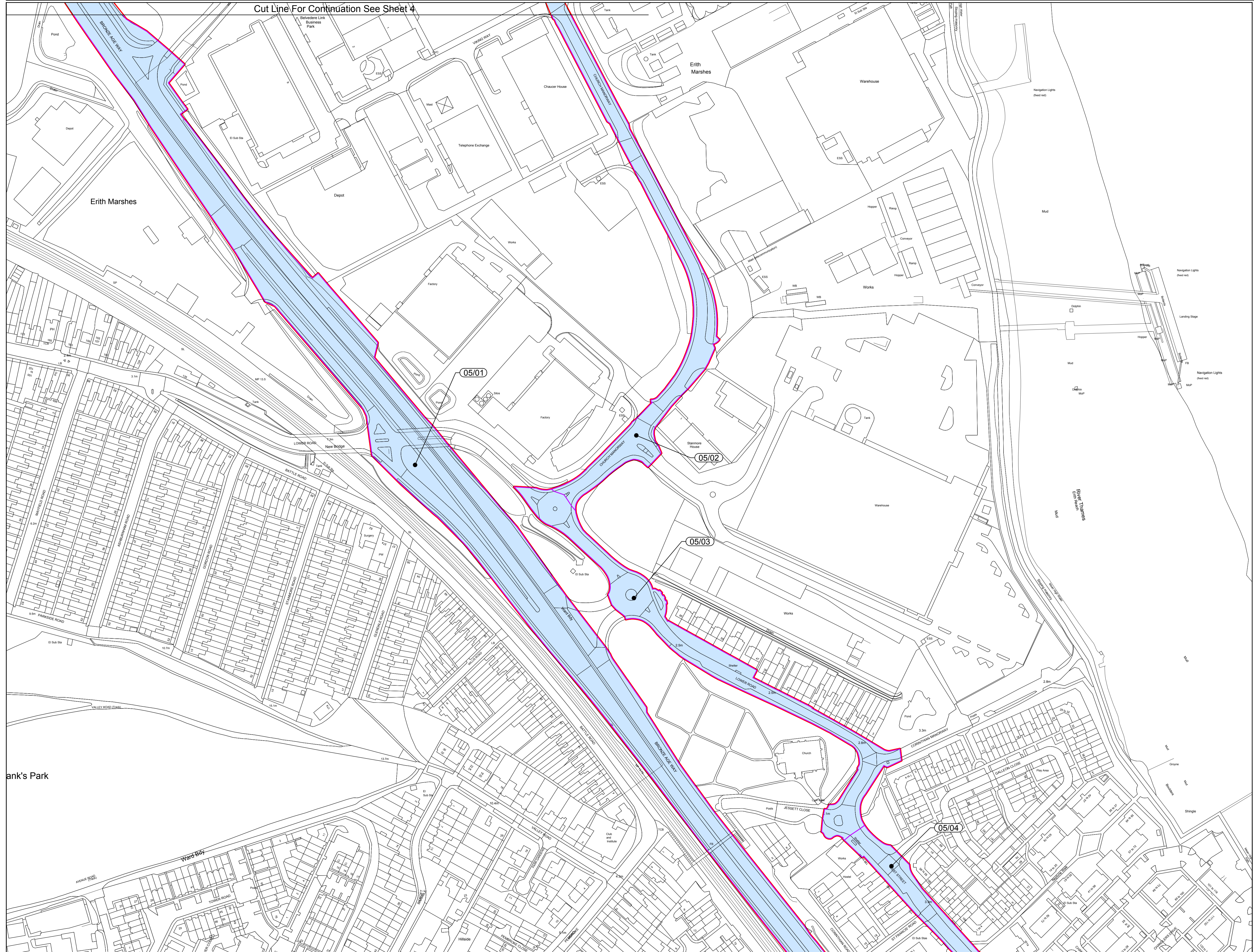
Cut Line For Continuation See Sheet 5

Cut Line For Continuation See Sheet 4



Key:

- Order limits - the area within which the authorised development may be carried out.
- Order land - freehold and leasehold to be compulsorily acquired and in relation to which it is proposed to extinguish easements, servitudes and other private rights.
- Order land - new rights to be compulsorily acquired and in relation to which it is proposed to extinguish easements, servitudes and other private rights.
- Order land - temporary use of land in relation to which it is proposed to suspend easements, servitudes and other private rights.



Land Plans
Sheet 5 of 16

Scale: 1:1250 @ A1
20m 0m 20m 40m 60m 80m

Dwg Ref: N/CAD TeamCory Environmental/DWGS/Master Plan/Cory_E_Master_Plan_Rev0_14.11.2018.dwg

Doc Ref: 2.1 Regulation 5(2)(i)

© Crown copyright and database rights 2018 Ordnance Survey 0100031673

	Date: 14.11.2018	Drawn by: G.J.
	Rev: 0	Checked: A.P.



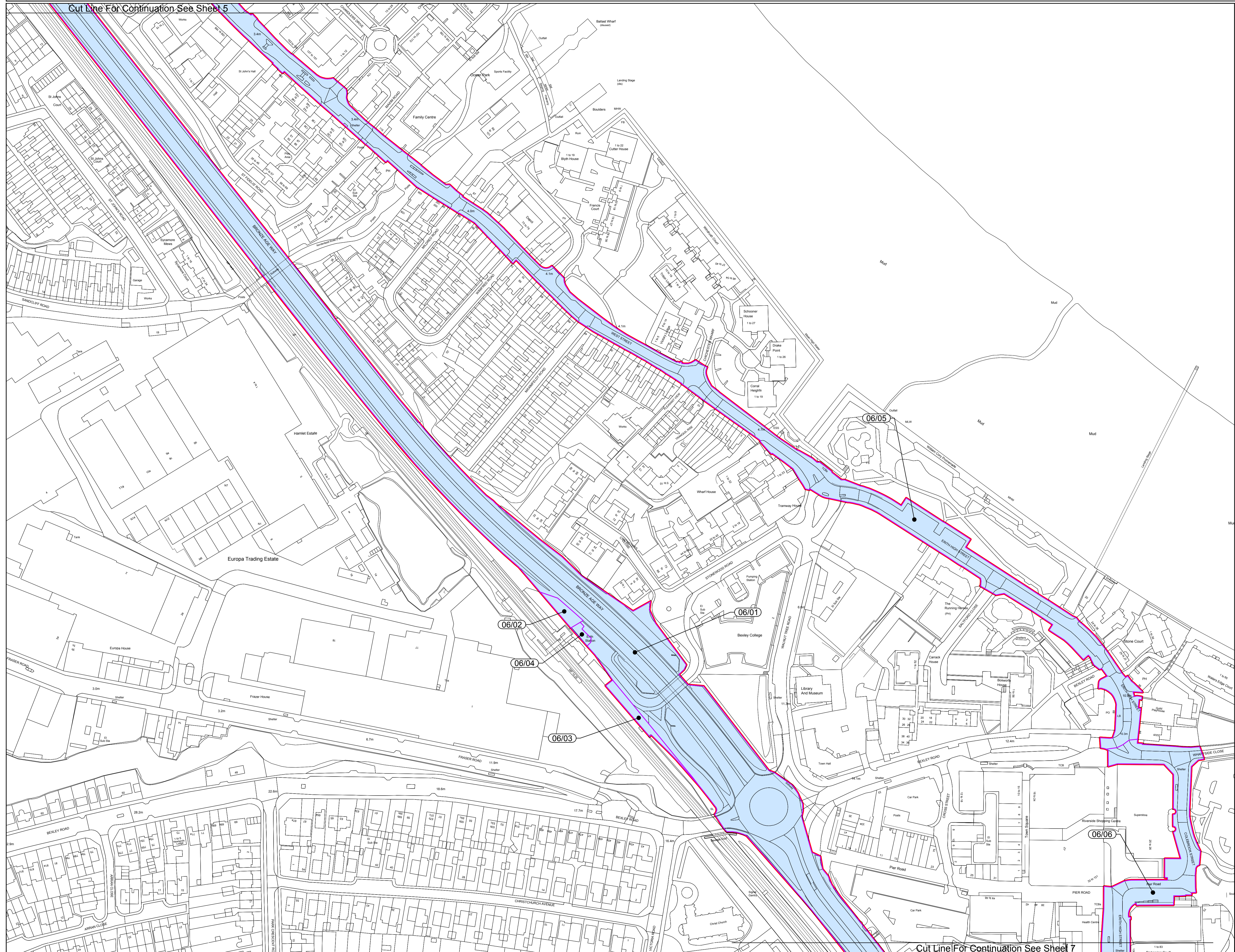
Cut Line For Continuation See Sheet 6

Cut Line For Continuation See Sheet 5



Key:

- Order limits - the area within which the authorised development may be carried out.
- Order land - freehold and leasehold to be compulsorily acquired and in relation to which it is proposed to extinguish easements, servitudes and other private rights.
- Order land - new rights to be compulsorily acquired and in relation to which it is proposed to extinguish easements, servitudes and other private rights.
- Order land - temporary use of land in relation to which it is proposed to suspend easements, servitudes and other private rights.



Cut Line For Continuation See Sheet 7

Title: **Land Plans Sheet 6 of 16**

Scale: 1:1250 @ A1

Dwg Ref: N\CAD Team\Cory Environmental\DWGS\Master Plan\Cory_E_Master_Plan_Rev0_14.11.2018.dwg

Doc Ref: 2.1 Regulation 5(2)(i)

© Crown copyright and database rights 2018 Ordnance Survey 0100031673

Date: 14.11.2018	Drawn by: G.J.
Rev: 0	Checked: A.P.

Riverside Energy Park

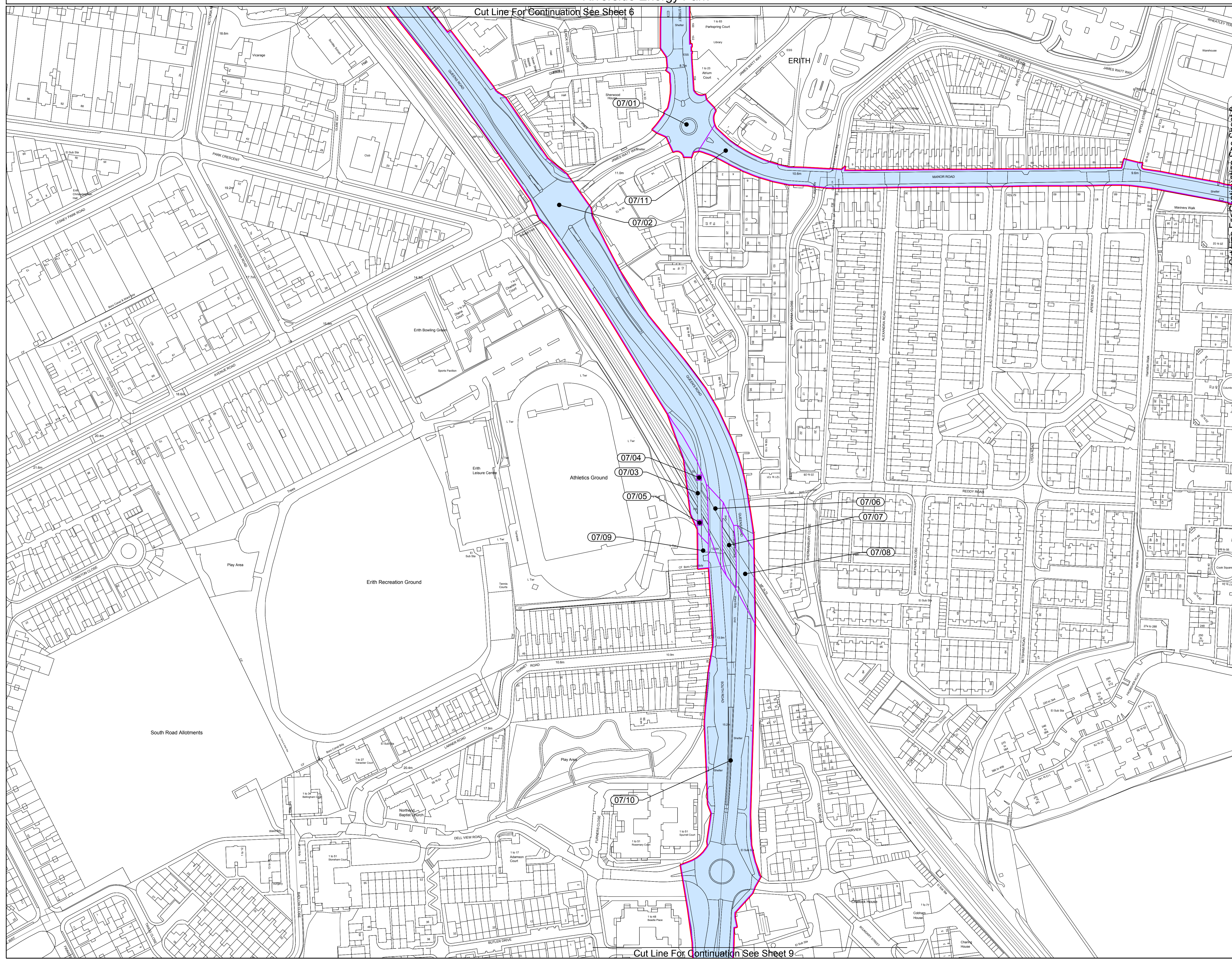
Cut Line For Continuation See Sheet 6



Key:

- Order limits - the area within which the authorised development may be carried out.
- Order land - freehold and leasehold to be compulsorily acquired and in relation to which it is proposed to extinguish easements, servitudes and other private rights.
- Order land - new rights to be compulsorily acquired and in relation to which it is proposed to extinguish easements, servitudes and other private rights.
- Order land - temporary use of land in relation to which it is proposed to suspend easements, servitudes and other private rights.

Interest to be acquired	Relevant Plots
New Rights to be compulsorily acquired and in relation to which it is proposed to extinguish easements, servitudes and other private rights	07/01 07/02 07/09 07/10 07/11
New Rights to be compulsorily acquired and in relation to which it is proposed to extinguish easements, servitudes and other private rights at footbridge level	07/03 07/04 07/05
New Rights to be compulsorily acquired and in relation to which it is proposed to extinguish easements, servitudes and other private rights at road level	07/06 07/08
New Rights to be compulsorily acquired for the purposes of access and maintenance only at railway level	07/03 07/06 07/07 07/08



Cut Line For Continuation See Sheet 9

Title: **Land Plans Sheet 7 of 16**

Scale: 1:1250 @ A1

Dwg Ref: N\CAD Team\Cory Environmental\DWGS\Master Plan\Cory_E_Master_Plan_Rev0_14.11.2018.dwg

Doc Ref: 2.1 Regulation 5(2)(i)

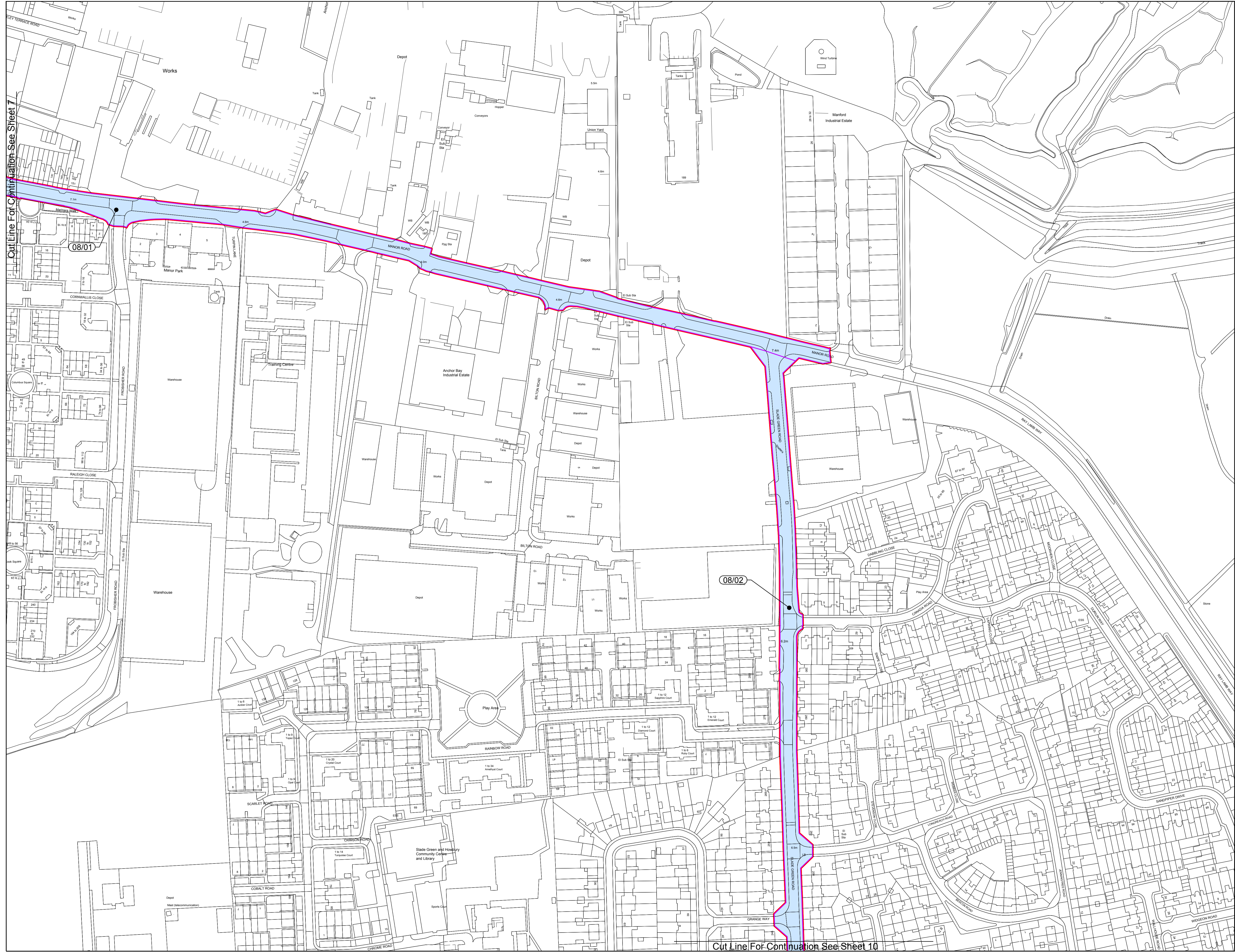
© Crown copyright and database rights 2018 Ordnance Survey 0100031673

North Arrow

Date: 14.11.2018 Drawn by: G.J.
Rev: 0 Checked: A.P.

Key:

- Order limits - the area within which the authorised development may be carried out.
- Order land - freehold and leasehold to be compulsorily acquired and in relation to which it is proposed to extinguish easements, servitudes and other private rights.
- Order land - new rights to be compulsorily acquired and in relation to which it is proposed to extinguish easements, servitudes and other private rights.
- Order land - temporary use of land in relation to which it is proposed to suspend easements, servitudes and other private rights.



Cut Line For Continuation See Sheet 7

08/01

08/02

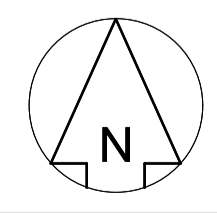
Cut Line For Continuation See Sheet 10

Title: **Land Plans**
Sheet 8 of 16

Scale: 1:1250 @ A1

Dwg Ref: N\CAD Team\Cory Environmental\DWGS\Master Plan\Cory_E_Master_Plan_Rev0_14.11.2018.dwg
 Doc Ref: 2.1 Regulation 5(2)(i)

© Crown copyright and database rights 2018 Ordnance Survey 0100031673

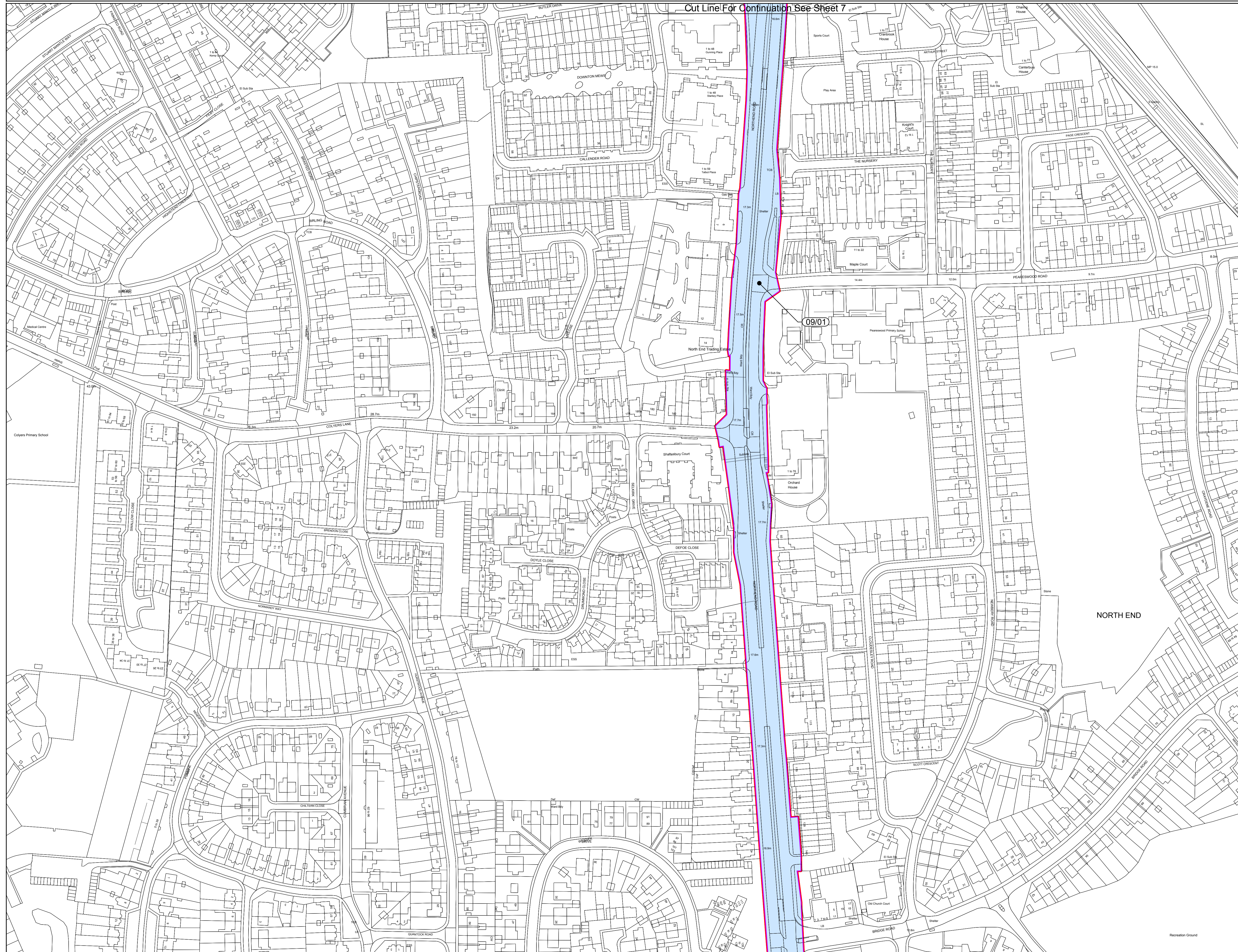


Date:	14.11.2018	Drawn by:	G.J.
Rev:	0	Checked:	A.P.



Riverside Energy Park

Cut Line For Continuation See Sheet 7



- Key:
- Order limits - the area within which the authorised development may be carried out.
 - Order land - freehold and leasehold to be compulsorily acquired and in relation to which it is proposed to extinguish easements, servitudes and other private rights.
 - Order land - new rights to be compulsorily acquired and in relation to which it is proposed to extinguish easements, servitudes and other private rights.
 - Order land - temporary use of land in relation to which it is proposed to suspend easements, servitudes and other private rights.

Title: **Land Plans Sheet 9 of 16**

Scale: 1:1250 @ A1

Dwg Ref: N\CAD Team\Cory Environmental\DWGS\Master Plan\Cory_E_Master_Plan_Rev0_14.11.2018.dwg

Doc Ref: 2.1 Regulation 5(2)(i)

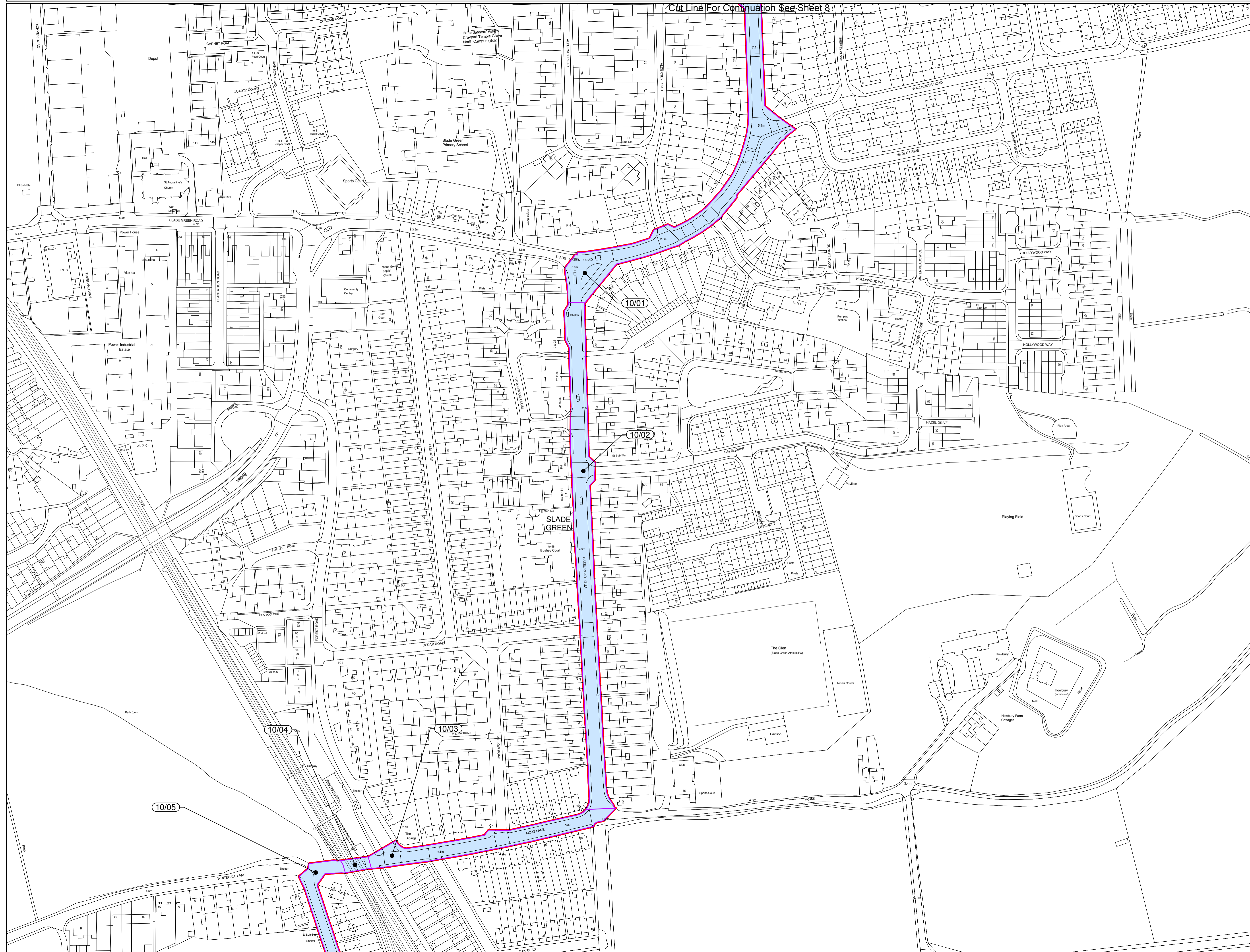
© Crown copyright and database rights 2018 Ordnance Survey 0100031673

	Date: 14.11.2018	Drawn by: G.J.
	Rev: 0	Checked: A.P.

Cut Line For Continuation See Sheet 11

Riverside Energy Park

Cut Line For Continuation See Sheet 8



Cut Line For Continuation See Sheet 11



Key:

- Order limits - the area within which the authorised development may be carried out.
- Order land - freehold and leasehold to be compulsorily acquired and in relation to which it is proposed to extinguish easements, servitudes and other private rights.
- Order land - new rights to be compulsorily acquired and in relation to which it is proposed to extinguish easements, servitudes and other private rights.
- Order land - temporary use of land in relation to which it is proposed to suspend easements, servitudes and other private rights.

Interest to be acquired	Relevant Plots
New Rights to be compulsorily acquired and in relation to which it is proposed to extinguish easements, servitudes and other private rights	10/01 10/02 10/03 10/05
New Rights to be compulsorily acquired and in relation to which it is proposed to extinguish easements, servitudes and other private rights in the subsoil only	10/04

Title: **Land Plans**
Sheet 10 of 16

Scale: 1:1250 @ A1

Dwg Ref: N\CAD Team\Cory Environmental\DWGS\Master Plan\Cory_E_Master_Plan_Rev0_14.11.2018.dwg

Doc Ref: 2.1 Regulation 5(2)(i)

© Crown copyright and database rights 2018 Ordnance Survey 0100031673

	Date: 14.11.2018	Drawn by: G.J
	Rev: 0	Checked: A.P



Riverside Energy Park

Cut Line For Continuation See Sheet 9

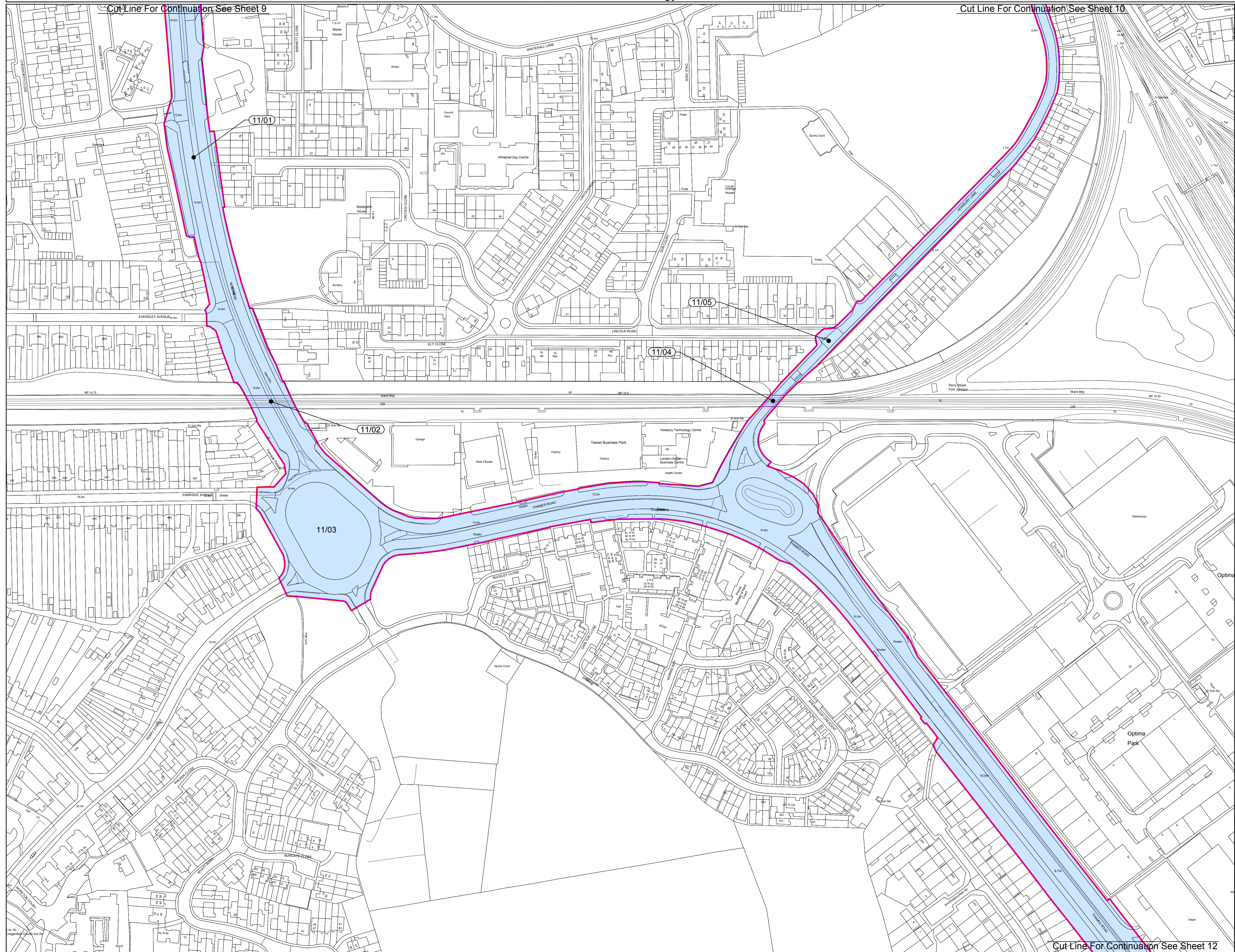
Cut Line For Continuation See Sheet 10



Key:

- Order limits - the area within which the authorised development may be carried out.
- Order land - freehold and leasehold to be compulsorily acquired and in relation to which it is proposed to extinguish easements, servitudes and other private rights.
- Order land - new rights to be compulsorily acquired and in relation to which it is proposed to extinguish easements, servitudes and other private rights.
- Order land - temporary use of land in relation to which it is proposed to suspend easements, servitudes and other private rights.

Interest to be acquired	Relevant Plots
New Rights to be compulsorily acquired and in relation to which it is proposed to extinguish easements, servitudes and other private rights	11/01
	11/03
	11/05
New Rights to be compulsorily acquired and in relation to which it is proposed to extinguish easements, servitudes and other private rights at road level	11/02
	11/04



Title: **Land Plans Sheet 11 of 16**

Scale: 1:1250 @ A1

Dwg Ref: N\CAD Team\Cory Environmental\DWGS\Master Plan\Cory_E_Master_Plan_Rev0_14.11.2018.dwg

Doc Ref: 2.1 Regulation 5(2)(i)

© Crown copyright and database rights 2018 Ordnance Survey 0100031673

	Date: 14.11.2018	Drawn by: G.J.
	Rev: 0	Checked: A.P.



Cut Line For Continuation See Sheet 12

Cut Line For Continuation See Sheet 11



- Key:
- Order limits - the area within which the authorised development may be carried out.
 - Order land - freehold and leasehold to be compulsorily acquired and in relation to which it is proposed to extinguish easements, servitudes and other private rights.
 - Order land - new rights to be compulsorily acquired and in relation to which it is proposed to extinguish easements, servitudes and other private rights.
 - Order land - temporary use of land in relation to which it is proposed to suspend easements, servitudes and other private rights.
 - Open Space
 - Local Authority Boundary

Interest to be acquired	Relevant Plots
New Rights to be compulsorily acquired and in relation to which it is proposed to extinguish easements, servitudes and other private rights	12/01, 12/02 12/03, 12/04 12/05, 12/06 12/07, 12/08 12/09, 12/11 12/13, 12/14 12/15, 12/16 12/17, 12/18 12/19
New Rights to be compulsorily acquired and in relation to which it is proposed to extinguish easements, servitudes and other private rights at road level	12/10
New Rights to be compulsorily acquired and in relation to which it is proposed to extinguish easements, servitudes and other private rights in the subsoil only	12/12

Inset 3
Scale 1:500

Inset 3

Cut Line For Continuation See Sheet 13

Title: **Land Plans Sheet 12 of 16**

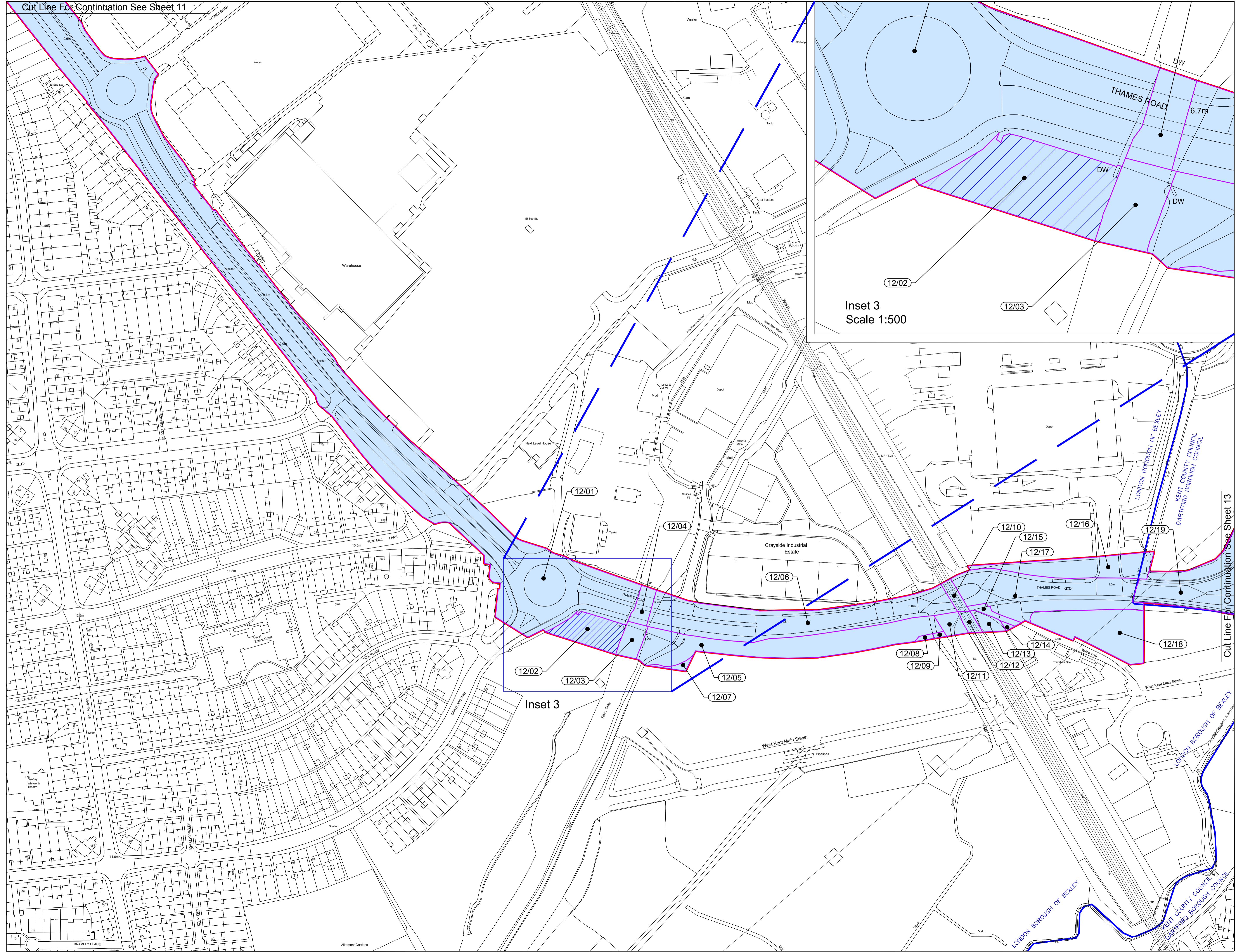
Scale: 1:1250 @ A1

Dwg Ref: N\CAD Team\Cory Environmental\DWGS\Master Plan\Cory_E_Master_Plan_Rev0_14.11.2018.dwg

Doc Ref: 2.1 Regulation 5(2)(i)

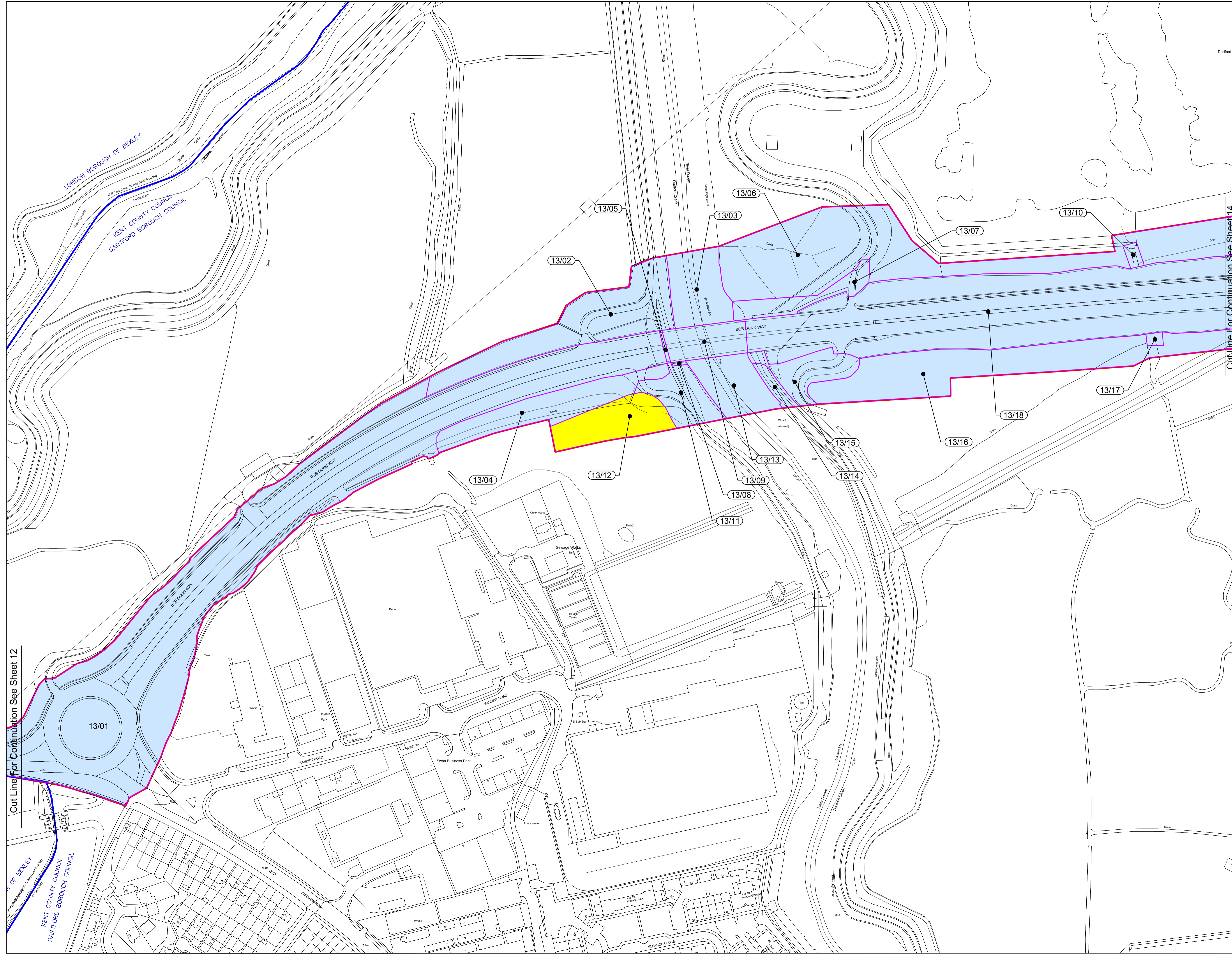
© Crown copyright and database rights 2018 Ordnance Survey 0100031673

Date: 14.11.2018	Drawn by: G.J.
Rev: 0	Checked: A.P.



Key:

- Order limits - the area within which the authorised development may be carried out.
- Order land - freehold and leasehold to be compulsorily acquired and in relation to which it is proposed to extinguish easements, servitudes and other private rights.
- Order land - new rights to be compulsorily acquired and in relation to which it is proposed to extinguish easements, servitudes and other private rights.
- Order land - temporary use of land in relation to which it is proposed to suspend easements, servitudes and other private rights.
- Local Authority Boundary



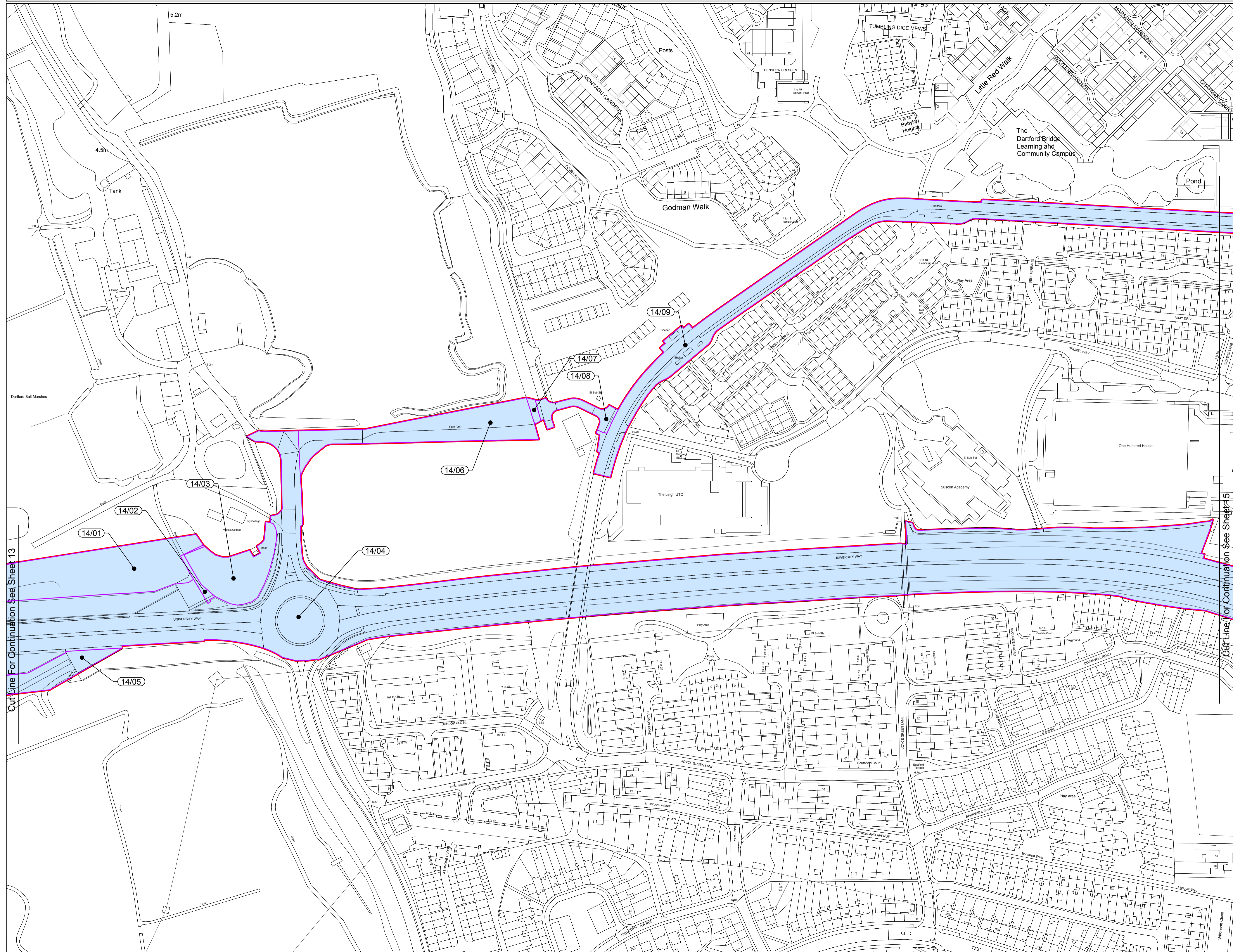
Cut Line For Continuation See Sheet 14

Cut Line For Continuation See Sheet 12

Title:		Land Plans Sheet 13 of 16	
Scale:		1: 1250 @ A1	
Dwg Ref:		N\CAD Team\Cory Environmental\DWGS\Master Plan\Cory_E_Master_Plan_Rev0_14.11.2018.dwg	
Doc Ref:		2.1	
© Crown copyright and database rights 2018 Ordnance Survey 0100031673		Regulation 5(2)(i)	
	Date:	14.11.2018	
	Rev:	0	
Drawn by:	G.J.		
Checked:	A.P.		

Key:

- Order limits - the area within which the authorised development may be carried out.
- Order land - freehold and leasehold to be compulsorily acquired and in relation to which it is proposed to extinguish easements, servitudes and other private rights.
- Order land - new rights to be compulsorily acquired and in relation to which it is proposed to extinguish easements, servitudes and other private rights.
- Order land - temporary use of land in relation to which it is proposed to suspend easements, servitudes and other private rights.

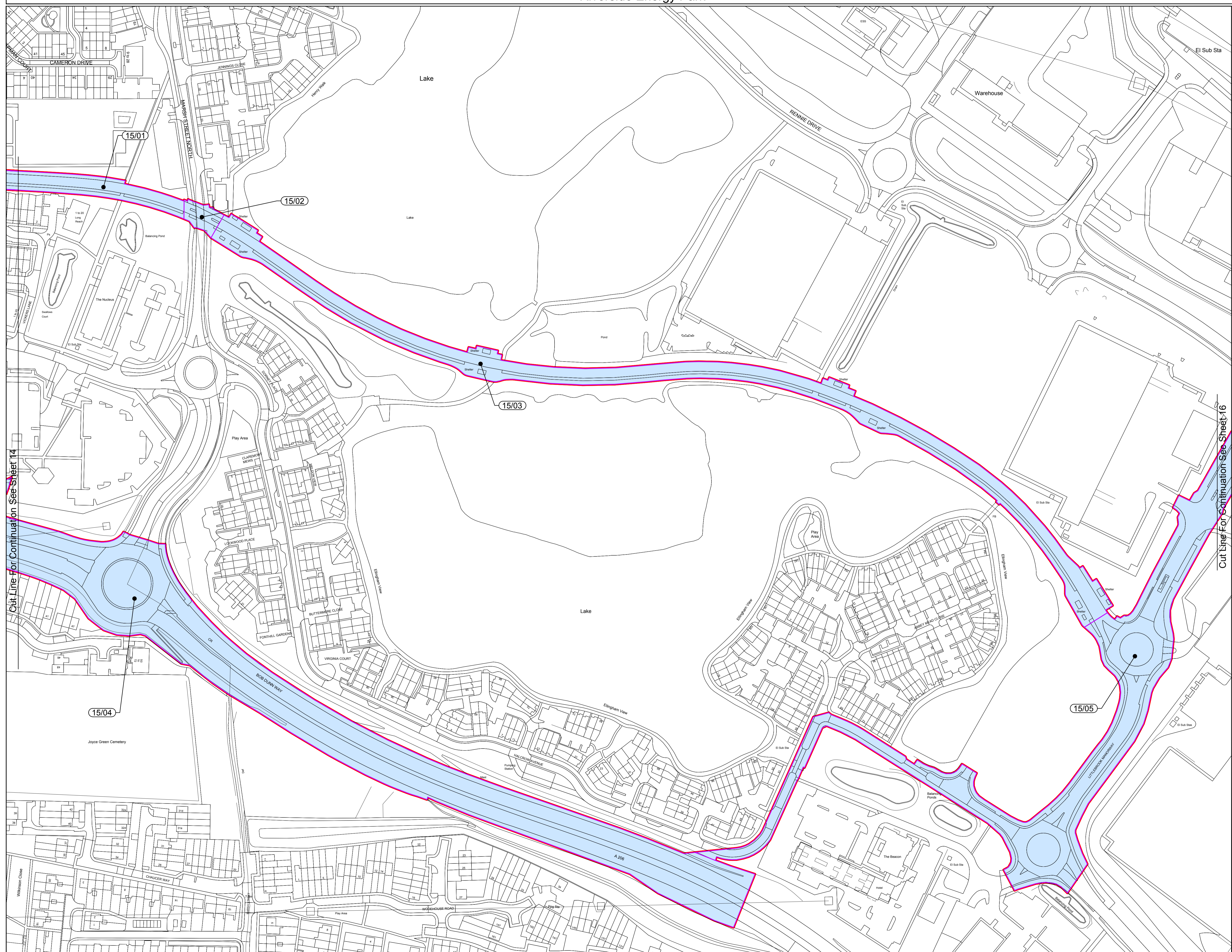


Cut Line For Continuation See Sheet 13

Cut Line For Continuation See Sheet 15

Title:		Land Plans Sheet 14 of 16	
Scale:		1: 1250 @ A1	
Dwg Ref: N\CAD Team\Cory Environmental\DWG\Master Plan\Cory_E_Master_Plan_Rev0_14.11.2018.dwg		Regulation 5(2)(i)	
Doc Ref: 2.1			
© Crown copyright and database rights 2018 Ordnance Survey 0100031673			
	Date: 14.11.2018	Drawn by: G.J.	
	Rev: 0	Checked: A.P.	

- Key:
- Order limits - the area within which the authorised development may be carried out.
 - Order land - freehold and leasehold to be compulsorily acquired and in relation to which it is proposed to extinguish easements, servitudes and other private rights.
 - Order land - new rights to be compulsorily acquired and in relation to which it is proposed to extinguish easements, servitudes and other private rights.
 - Order land - temporary use of land in relation to which it is proposed to suspend easements, servitudes and other private rights.



Cut Line For Continuation See Sheet 14

Cut Line For Continuation See Sheet 16

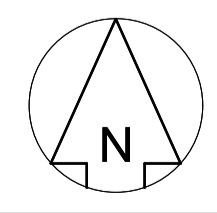
Title:
Land Plans
Sheet 15 of 16

Scale: 1:1250 @ A1

Dwg Ref: N\CAD Team\Cory Environmental\DWGS\Master Plan\Cory_E_Master_Plan_Rev0_14.11.2018.dwg

Doc Ref: 2.1 Regulation 5(2)(i)

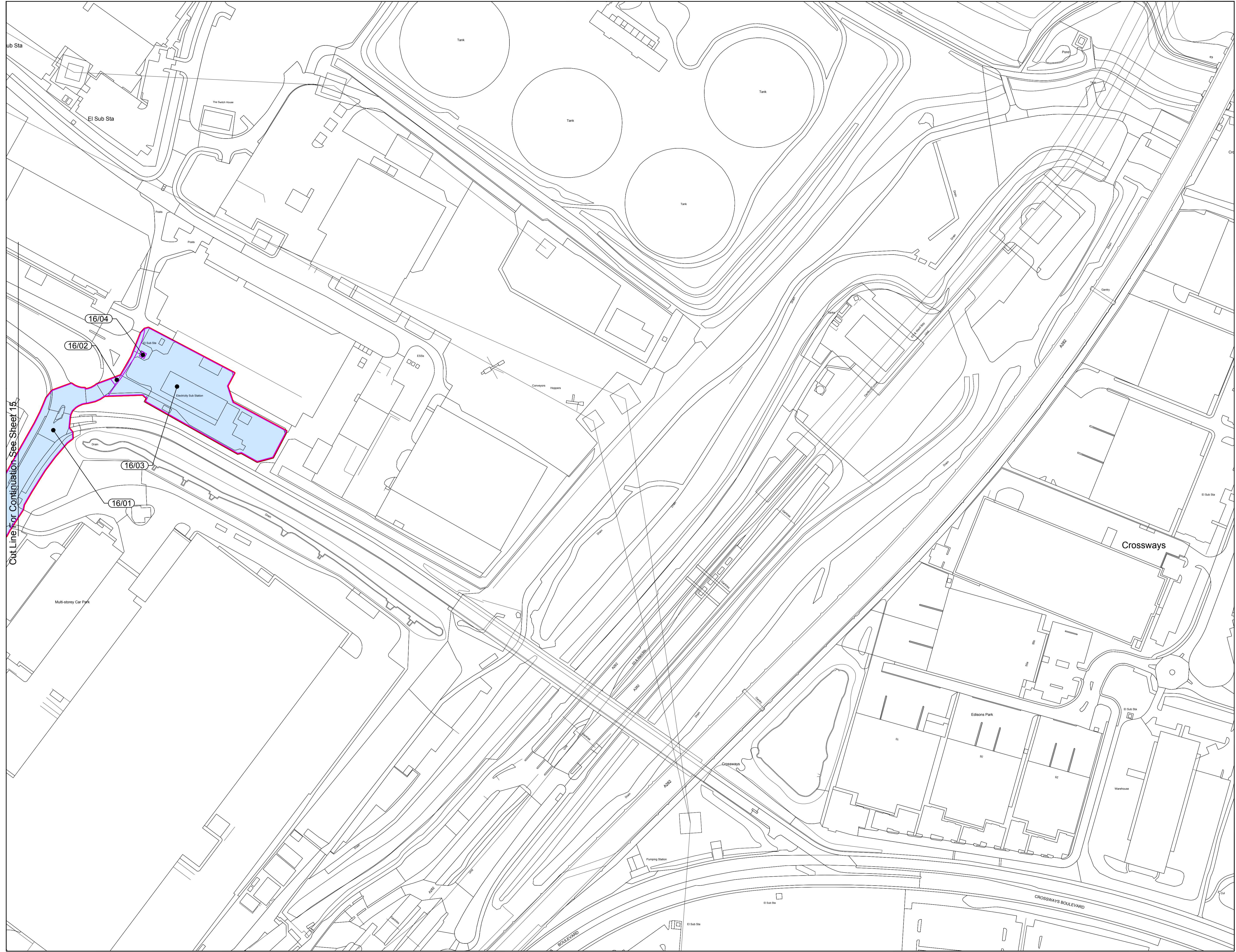
© Crown copyright and database rights 2018 Ordnance Survey 0100031673



Date: 14.11.2018	Drawn by: G.J
Rev: 0	Checked: A.P



- Key:
- Order limits - the area within which the authorised development may be carried out.
 - Order land - freehold and leasehold to be compulsorily acquired and in relation to which it is proposed to extinguish easements, servitudes and other private rights.
 - Order land - new rights to be compulsorily acquired and in relation to which it is proposed to extinguish easements, servitudes and other private rights.
 - Order land - temporary use of land in relation to which it is proposed to suspend easements, servitudes and other private rights.



Title: **Land Plans Sheet 16 of 16**

Scale: 1:1250 @ A1

Dwg Ref: N\CAD Team\Cory Environmental\DWGS\Master Plan\Cory_E_Master_Plan_Rev0_14.11.2018.dwg

Doc Ref: 2.1 Regulation 5(2)(i)

© Crown copyright and database rights 2018 Ordnance Survey 0100031673

	Date: 14.11.2018	Drawn by: G.J
	Rev: 0	Checked: A.P